**Design Features include:**

- Factory-assembled disc module for reliability & performance
- Easy installation and reduced wear
- High torsional stiffness
- High speed
- High misalignment capacity
- Reduced reactionary forces
- Low inertia

Applications:

- Reciprocating torques
- Test benches

Industry Compliant:

- ATEX II 2GD c T6
- DIN 740

Special design options:

- Special alloys, stainless steel, aluminum and carbon fiber versions
- Custom coatings for corrosion resistance
- Electrically insulated

Rexnord BSD Modulflex couplings and Koniclump clamping hubs

for Hottinger Torque Meters

Customer-focused Solutions.**Reliable Performance.****Trusted Brands.**

You want a trusted name when it comes to providing engineered power transmission products that improve productivity and efficiency. Rexnord provides superior products for your industrial applications world wide. We work closely with you to reduce maintenance costs, eliminate redundant inventories and prevent equipment downtime.

BSD Modulflex

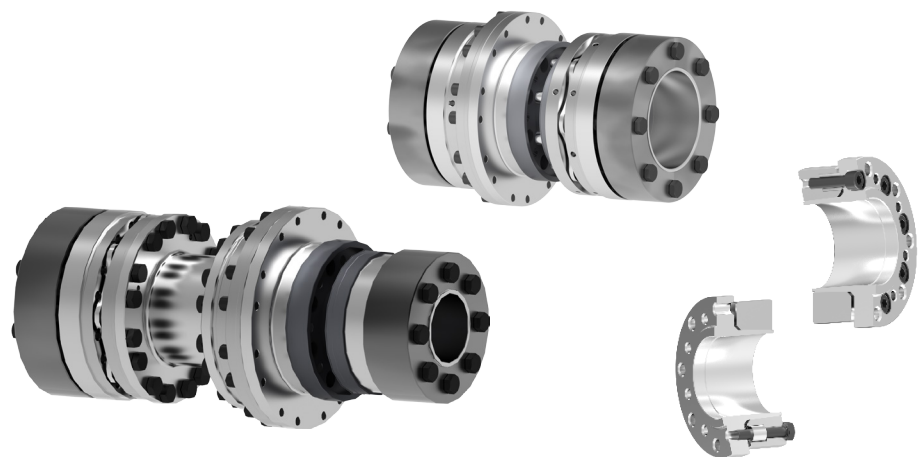
Modulflex® is an all-metal, flexible disc coupling featuring factory-assembled, interference-fit bolt joints unlike standard disc couplings. In addition to its modular design, Modulflex delivers higher speeds, greater torque transmission and easier installation.

BSD Koniclump

Clamping Hubs Type Koniclump® with integrated releasing technology provide frictional shaft connection.

Clamping bolts also serve as releasing bolts. Additional fastening elements or special tools are not necessary.

Clamping hubs are supplied as steel or Aluminium version.



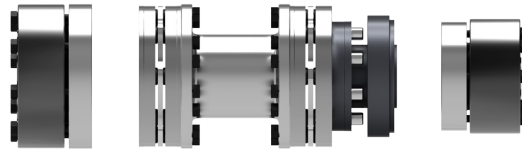
Modulflex® and Koniclump® for HBM Torque Meters



ATEX II 2GD c T6

Modulflex couplings
main types and design benefits

Spacer version
Series 9256-x-4xx Steel
Series 9856-x-4xx Aluminium



- Reduce reaction forces when connecting middle and long bearing distance
- Easy assembly with the Koniclump clamping hub

Short distance version
Series 9276-x-4xx Steel



- Suitable for the application with well aligned shafts
- Compact design

Sandwich version
Series 9216-x-14xx Steel
Series 9816-x-14xx Aluminium



- Application of a torque meter between coupling elements
- Short length version to reduce reaction forces

HBM Torque Meter	Torque Range	Spacer version 9x56-x-4xx				Short distance version 9x76-x-4xx				Sandwich version 9x16-x-14xx			
		Steel		Aluminium		Steel		Aluminium		Steel		Aluminium	
		A *	B *	A *	B *	A *	B *	A *	B *	A *	B *	A *	B *
T10FS	0,1 ... 10 kNm	x	x	x	x	x	x			x	x	x	x
T12		x	x	x	x	x	x			x	x	x	x
T40		x	x	x	x	x	x			x	x	x	x
TB2		x	x	x	x	x	x			x	x	x	x
T40 FM	15 ... 80 kNm	x	(x)							x	(x)		
T40 FH	150 ... 250 kNm	x	(x)			(x)	(x)			(x)	(x)		

Component types and numbers	Spacer version 9x56-x-4xx				Short distance version 9x76-x-4xx				Sandwich version 9x16-x-14xx			
	Steel		Aluminium		Steel		Aluminium		Steel		Aluminium	
	A *	B *	A *	B *	A *	B *	A *	B *	A *	B *	A *	B *
Koniclump w. Modulflex connection	1	1	1	1	2	2			1	1	1	1
Koniclump w. torque meter connection	1	1	1	1					1	1	1	1
Modulflex Standard	1	1	1	1								
Modulflex w. large flange		1		1	1	1						
Modulflex -double flex- w. large flange									1	1	1	1
Modulflex -double flex- w. torque meter connection									1		1	
Modulflex w. torque meter connection	1		1		1	1						
Spacer	1	1	1	1								
Adapter flange		1		1	1	1				1		1

* Mounting position of the torque meter as per HBM instructions
x Standard configuration
(x) Design made to order

Product key (Example: 9256-45-4xx A)

9	2	5	6	-45-	4xx	A
1	2	3	4	5	6	7
1	Product Type: 9 = Modulflex coupling / Koniclump clamping hub					
2	Material: 2 = steel; 8 = Aluminium					
3	Design: 5 = spacer design (s. illustrations)					
4	Application: 1 = general industrial, 4 = marine, 6 and 7 = test benches					
5	Size: 45					
6	Modulflex element / Koniclump hub design: 4xx: 2 Koniclumps, 14xx: Modulflex double element + 2 Koniclumps					
7	Mounting position of the torque meter as per HBM instructions: A = bolted from ring side, B = bolted from flange side					